

BROADLEAF

*Newsletter for
Wholesale Distributors
May 3rd - June 30th
2010*

*It's Grillin' Season,
and we've got the goods!*

Wagyu Tenderloin

Wagyu NY Strips

Wagyu Rib Eye



FREE RANGE
GRASS-FED
NEW ZEALAND
LAMB



Chilled
N.Z. French Racks

Chilled
N.Z. DND, B/O Loin

Naturally Raised
**ON FAMILY
FARMS**

Please contact Broadleaf for frozen offerings:
800-336-3844 Ext.2 - Sales

100% Wagyu Beef Sliders
Burgers & Franks



GREG NORMAN
SIGNATURE WAGYU



"Kobe Style"



Great Memorial Day items



Newsletter for Wholesale Distributors

May 3rd - June 30th

Index:	Page #
Wagyu Beef; Australian Darling Downs, Domestic	2
Wagyu Beef; Portion Control and Grind Products	3
Greg Norman Australian Prime	4
Buffalo	5
Wild Boar, Antelope	6
Poultry	7
Ostrich, Rabbit, Kangaroo, Alligator, Turtle, Frog Legs,	8
Smoked Products, Bacon, Lamb, Porchetta, Veal, Goat	9
Kurobuta Pork, Suckling/Roasting Pigs	10
Hot Dogs, Sausages	11
Sausages, Ravioli, Trimmings	12
Pates, Mousses, Foie Gras	13
Venison	14
Elk	15
Wagyu Beef Marble Score Chart	16

Announcement:

Please come by and visit us at this year's NRA show in Chicago, 22-25th May. You will find us at booth # 3214.

Broadleaf will be closed on both Monday May 31st in observance of Memorial Day and Monday July 5th in observance of Independence Day. For our out of town airfreight customers we will be shipping weekend orders on Sunday's (rather than Saturday) these weekends to minimize transit time, and will have our 2pm cut off Friday as usual for your orders.

Key:

* denotes product available chilled CHD

A/L = Airline (wing drummette attached)
 B/O = Boneless
 S/B/O = Semi Boneless
 B/I = Bone In
 F/R = Free Range
 TTS = Trim To Silver
 DND = Denuded
 BRN = Boneless, Rolled & Netted
 H/O = Head On
 HOFO = Head On, Foot On
 (#) = A number in parentheses denotes wagyu Marble Score
 IVP = Individually Vacuum Packed
 S/On = Skin On
 S/Off = Skin Off
 C/C = Center Cut
 A/Smk = Applewood Smoked
 MKT = Market Price

Returned Product is Subject to a 15% Restocking Fee and all Broken Cases Subject to \$.25/lb. or Piece Case Break Charge

Hours of Operation: 6AM – 4:30PM Monday – Friday

Code	Item	FZN	CHD	Code	Item	FZN	CHD
------	------	-----	-----	------	------	-----	-----

AUSTRALIAN DARLING DOWNS WAGYU BEEF

51534	Tenderloin (3), 190, 5 pc		*
51433	Strip Loin (3), B/O 1 Rib, 3 pc		*
51434	Strip Loin (4), B/O 1 Rib, 3 pc		*
51634	Shortloin B/I (3), 2 pc		*
51675	Shortloin B/I (5), 2 pc		*
552443	Rib eye (3), B/O 7 rib, lip off, 3 pc		*
552441	Rib eye (4), B/O 7 rib, lip off, 3 pc		*
56033	Tomahawk Long Bone Ribs (3), 5-6 1/2's		*
56034	Export Ribs (3), 2 pc		*
56055	Export Ribs (5), 2 pc		*
54634	Short Ribs B/O (3), 20#		*
51952	Outside Skirts (3) Peeled, 20#		*
52134	Flank Steaks (3), 25#		*
56434	Chuck Ribs B/O (3), 30#		*
52635	Chuck Tail Flap (3), 30#		*
51852	Hanging Tenders (3), 12/3pk		*
58653	Cheek Meat (3), 20#		*
53235	Top Blades (3), 25#		*
50934	Coulotte (3), 184D, 30#		*
51334	Tri Tips (3), 25#		*
52034	Flap Meat (3), 50#		*
52037	Inside Skirts (3) Peeled, 45#		*
51134	Top Sirloin (3), C/Off, 184B, 6pc		*
52634	Chuck Eye Roll (3), 2/15#		*
50434	Eye of Round (3), 50#		*
50034	Top Round Cap Off (3), 3/15#		*
53534	Brisket 5 Rib Deckle Off (3), 3/14#		*
53234	Shoulder Clod (3), 4/10#		*
50734	Peeled Knuckle (3), 4/10#		*
53134	Chuck Tender (3), 35#		*
50534	Bottom Flat (3), 3/13#		*
56995	Back Ribs, Aprox 30# case, order by pound		*



Independent assessors expertly grade marbling levels in our Wagyu Beef to international standards on the rib eye muscle of each chilled carcass. Each of the valuable prime cuts are then specially sorted for our customers using the ACo Wagyu Grading System. Our Wagyu grades range from 3 to 12 with an average of 6 and only an elite 5% of cattle grade higher than 9. See page 16 for marble chart.

Wagyu Beef Tenderloin Filet Steaks (Marble Score 3)

AUSTRALIAN WAGYU DELI ITEMS

57260	Pastrami (Brisket), 1 pc		
57350	Raw Corned Brisket, 2 pc		*
57351	Raw Corned Brisket Small pc, 6 pc		*

DOMESTIC WAGYU BEEF

59939	Domestic Wagyu Steamships, 1/75#		
-------	----------------------------------	--	--

Code	Item	FZN
AUSTRALIAN WAGYU BEEF - PORTIONED PRODUCTS		
58971	Tenderloin stk (3) 8oz, 12 pc	
58853	Rib eye Filet stk (6) 6oz, 12 pc	
58953	Rib eye Filet stk (6) 8oz, 12 pc	
58954	Rib eye Filet stk (6) 10oz, 12 pc	
58955	Rib eye Filet stk (6) 12oz, 12 pc	
58916	Rib eye Filet stk (5) 6oz, 12 pc	
58958	Rib eye Filet stk (5) 8oz, 12 pc	
58957	Rib eye Filet stk (5) 10oz, 12 pc	
58956	Rib eye Filet stk (5) 12oz, 12 pc	
58995	Rib eye Filet stk (3+) 6oz, 12 pc	
58951	Rib eye Filet stk (3+) 8oz, 12 pc	
58950	Rib eye Filet stk (3+) 10oz, 12 pc	
58949	Rib eye Cap Meat (3+) IVP, 3 pc	
56057	2 Rib Tomahawk Roast (7) IVP, 1 pc	
56063	4 Rib Standing Rib Roast (3) IVP, 1 pc	
58918	Rib eye B/I split (3+) 16oz, 8 pc	
56032	Rib eye B/I Tomahawk stk (3+)	
	approx 36-40oz, 2/2pk, 9-11#	
58900	Rib eye B/I Tomahawk stk (3+)	
	approx 30-33oz, 2/2pk, 8-10#	
58901	Rib eye B/I Tomahawk stk (3+)	
	approx 26-28oz, 2/2pk, 7-8#	
57934	Ribeye Sandwich stk (3+), 10#	
58942	NY Strip stk (6) 10oz, 12 pc	
58941	NY Strip stk (6) 12oz, 12 pc	
58886	NY Strip C/C stk (4) 10oz, 12 pc	
58888	NY Strip C/C stk (4) 12oz, 12 pc	
58899	NY Strip C/C stk (4) 12oz, 6 pc	
58986	NY Strip C/C stk (3) 10oz, 12 pc	
58988	NY Strip C/C stk (3) 12oz, 12 pc	
58896	Porterhouse stk (3) 24oz, 6 pc	
58866	T-Bone stk (3) 16oz, 8 pc	
58836	Bone In NY Strip stk (3) 16oz, 8 pc	
58934	NY Strip sandwich stk (3+), 10#	
58928	Flat Iron stk (3) 6oz, 10#	
58927	Flat Iron stk (3) 8oz, 10#	
58919	Top Sirloin C/C stk (3+) 8oz, IVP, 10#	
58922	Top Sirloin C/C stk (3+) 6oz, IVP, 10#	
58923	Top Sirloin stk (3+) 4oz, IVP, 10#	

Code	Item	FZN
AUSTRALIAN WAGYU BEEF - PORTIONED PRODUCTS		
58634	Short Ribs B/O Country Style, 10#	
58938	Kabob Meat (Diced), 10#	
58940	Stew Meat (Diced), 10#	
58970	Patties 10oz Round, 10#	
58992	Patties 2-1 Round, 10#	
58993	Patties 3-1 Round, 10#	
58994	Patties 4-1 Round, 10#	
58902	Patties 8-1 Round, bulk pack, 10#	
58999	Ground, 4/2½#	
58998	Ground, 10/1#	

We cut our Wagyu Beef on site in our state-of-the-art cutting room with highly experienced meat cutters.

If there is something that you need cut fresh or to a specific size or marble score, please call us. We're happy to help.

Let Broadleaf do the work!



Wagyu NY Strip Steak (MB 6)

AUSTRALIAN WAGYU BEEF - PORTIONED PRODUCTS

- 58634 Short Ribs B/O Country Style, 10#
- 58938 Kabob Meat (Diced), 10#
- 58940 Stew Meat (Diced), 10#
- 58970 Patties 10oz Round, 10#
- 58992 Patties 2-1 Round, 10#
- 58993 Patties 3-1 Round, 10#
- 58994 Patties 4-1 Round, 10#
- 58902 Patties 8-1 Round, bulk pack, 10#
- 58999 Ground, 4/2½#
- 58998 Ground, 10/1#

Code	Item	FZN	CHD	Code	Item	FZN
------	------	-----	-----	------	------	-----

GREG NORMAN SIGNATURE WAGYU BEEF

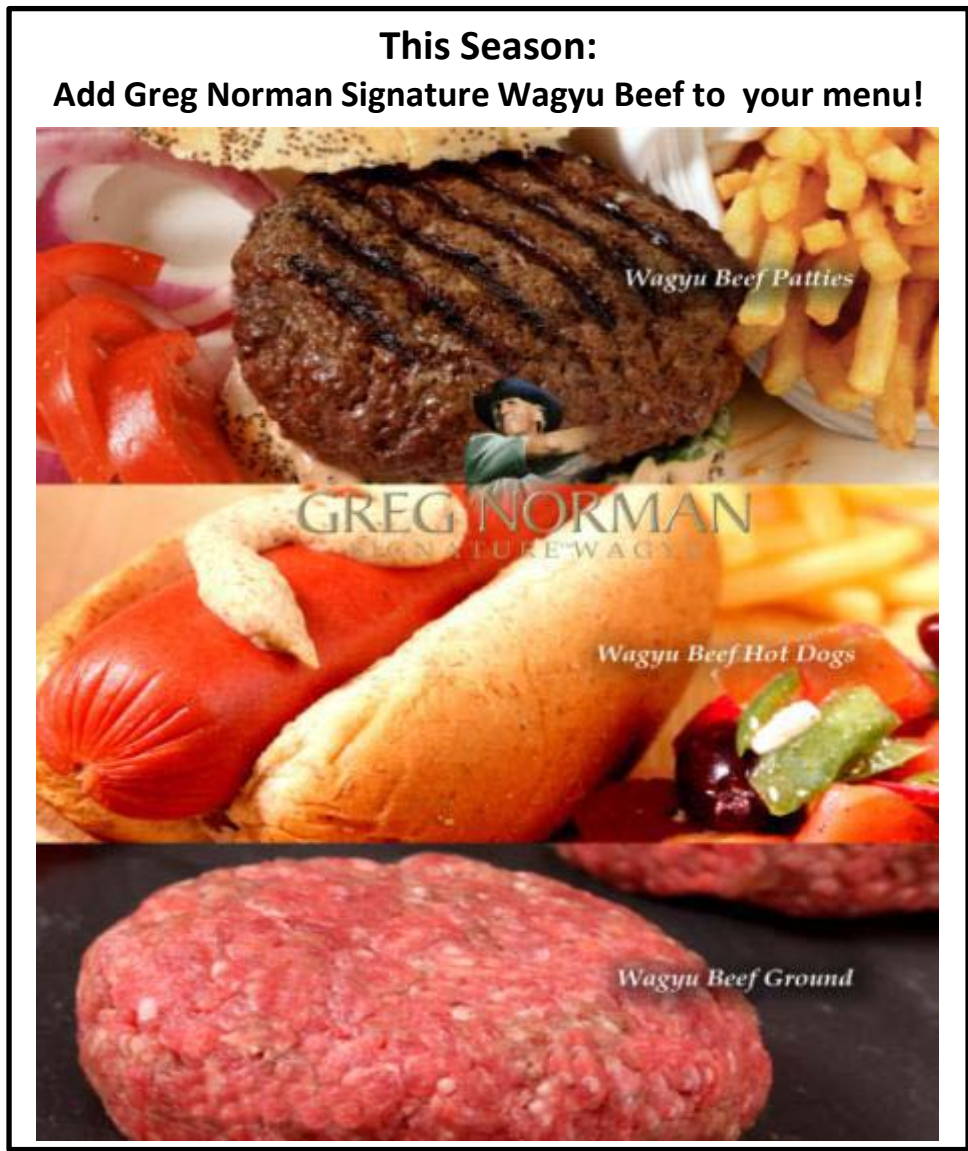
551435	Strip Loin (5), B/O 1 rib, 3 pc	*
551446	Strip Loin (6), B/O 1 rib, 3 pc	*
551447	Strip Loin (7), B/O 1 rib, 3 pc	*
551448	Strip Loin (8), B/O 1 rib, 3 pc	*
552435	Rib eye (5), B/O 7 Rib lip off, 3 pc	*
552446	Rib eye (6), B/O 7 Rib lip off, 3 pc	*
552447	Rib eye (7), B/O 7 Rib lip off, 3 pc	*
552448	Rib eye (8), B/O 7 Rib lip off, 3 pc	*
551550	Tenderloin (5), 190, 5pc	*
551570	Tenderloin (7), 190, 5pc	*
551599	Tenderloin (9), 190, 5pc	*
550969	Coulotte (7), 184D, 35#	*
551169	Top Sirloin (7), Cap Off 184B, 6pc	*
51072	Top Sirloin Cap On w/Tri-Tip (5), 2pc	*
551369	Tri-Tips (7), 25#	*

GREG NORMAN SIGNATURE - PORTIONED PRODUCTS

57875	Tenderloin stk (5) 8oz, 12 pc
57801	NY Strip stk C/C (6) 8oz, 12 pc
57812	NY Strip stk C/C (6) 10oz, 12 pc
57823	NY Strip stk C/C (6) 12oz, 12 pc
57834	Rib eye stk (5) 8oz, 12 pc
57845	Rib eye stk (5) 10oz, 12 pc
57856	Rib eye stk (5) 12oz, 12 pc
57867	Top Sirloin C/C stk (7) 8oz, 15 pc
57883	Coulotte stk (5) 8oz, 15 pc
55636	Patties 10oz Round, 10#
55637	Patties 2-1 Round, 10#
55639	Patties 8-1 Round, bulk pack, 10#
55638	Ground, 4/2½#
58969	Hot Dog (skinless) 6 inch 4-1, 2/5#

GREG NORMAN SIGNATURE - RETAIL PRODUCTS

55563	Patties 3-1 Round, 12/4pc (21.2oz) pk
55568	Patties 8-1 Round, 12/12pc (24oz) pk
55564	Hot Dog (skinless) 4-1, 12/4pc (16oz) pk



GREG NORMAN PREMIUM - PORTIONED PRODUCTS

20018	Patties 3-1 Round, 10#
20017	Hot Dog 3-1 8 inch, 10#

Code	Item	FZN	CHD	Code	Item	FZN	CHD
------	------	-----	-----	------	------	-----	-----

BUFFALO

24066	Tenderloin 189A, 3/5# up		
24166	Tenderloin 189A, 3/5# down		
24047	Rib Eye, 2 pc cs		*
24012	Export Ribs, 3/12#		
24053	Shortloin B/In		
24031	NY Strip Loin, 2 pc cs		*
24070	Top Sirloin, 50#		
24019	Flank Steaks, 10#		
24067	Hanging Tenders, 10#		
24076	Tri Tips, 50#		
24054	Short Ribs, 4/2pk, 20#		
24056	Skirt Steaks, 10#		
24069	Top Rounds, 3/16#		
24055	Sirloin Tips, 60#		
24002	Bottom Flats, 4/14#		
24057	Steamship Rounds, 1/50#		
24010	Shoulder Clods, 60#		
24004	Briskets, 3/15#		
24017	Flap Meat, 30#		
24009	Chuck, 60#		
24092	Back Ribs, 40#		
24048	Rib Eye Stks 8oz, 10#		
24049	Rib Eye Stks 10oz, 10#		
24050	Rib Eye Stks 12oz, 10#		
24046	Porterhouse Stks 16oz, 10#		
24062	T-Bone Stks 16oz, 10#		
24030	NY Strip Stks 8oz, 10#		
24028	NY Strip Stks 10oz, 10#		
24029	NY Strip Stks 12oz, 10#		
24071	Top Sirloin Steaks 8oz, 10#		
24072	Top Sirloin Stks 10oz, 10#		
24073	Top Sirloin Stks 12oz, 10#		
24032	Osso Bucco 1 inch, 10/1#		
24059	Stew Meat (Diced), 2/5#		
24058	Stew Meat (Diced), 10/1#		

BUFFALO

24011	Ground Consomme (Chilli grind) 2/5#		
24025	Ground, 4/2½#		
24016	Ground, 10x1#		
24033	Patties 2-1 Oval, 10#		
24034	Patties 2-1 Round, 10#		
24035	Patties 2-1 Square, 10#		
24036	Patties 3-1 Oval, 10#		
24037	Patties 3-1 Round, 10#		
24039	Patties 4-1 Round, 10#		
24042	Patties 8-1 Round, 10#		
24026	w/Beef Ground 4/2½#		
24134	w/Beef Patties 2-1 Round, 10#		
24043	w/Beef Patties 3-1 Round, 10#		
24040	w/Beef Patties 8-1 Round, 10#		

Keep your protien costs down and keep buffalo on your menu.

TRY OUR NEW BUFFALO WITH BEEF BURGERS & GRINDS



RETAIL BUFFALO PRODUCTS

24082	Rib Eye Stks Boxed, 6/2x5oz		
24080	NY Strip Stks Boxed, 6/2x7oz		
24077	Top Sirloin Stks Boxed, 6/2x8oz		
24105	Ground Boxed, 7/1# (limited inventory)		
24085	Patties 4-1 Round Boxed, 6/4x4oz		
24079	Hot Dogs 6 inch 5-1, 6/8pk		
24081	Jerky Black Pepper, 2oz		*
24083	Jerky Black Pepper, 4oz		*

Code	Item	FZN	Code	Item	FZN
------	------	-----	------	------	-----

WILD BOAR

NILGAI ANTELOPE

- 31222 Tenderloins
- 31041 Loin Fillet, 10#
- 31021 B/O Loins TTS, 1.5# up, 40#
- 31035 B/O Loins TTS, 1.5# down, 40#
- 31097 Frenched 8 Rib Rack 1-2#, 15-20#
- 31014 Saddle B/I, 40#
- 31010 Leg BRN, 40#
- 31004 Shoulder BRN, 40#
- 31009 Leg B/I, 40#
- 31101 Baby Back Ribs, 20#
- 31023 Trim, 50#
- 31002 Bellies, 45#
- 31220 St. Louis Ribs, 20#
- 31005 Loin Chops B/I 4-6oz
- 31006 Loin Chops B/I 6-8oz
- 31007 Loin Chops B/I 8-10oz
- 31011 Medallions 4oz, 10#
- 31031 Long Bone Rib Chops, 10#
- 31012 Osso Bucco 2 inch, 10#
- 31019 Stew Meat (Diced), 2/5#
- 31008 Ground, 2/5#
- 31039 Patties 2-1 Round, 10#

- 23018 Tenderloin, 5/2pk
- 23022 NY Strip Loin B/O, 10#
- 23012 Rib eye B/O, 15-20#
- 23011 Frenched 8 bone Racks, 4pc, 20#
- 23005 Denver Leg B/O, 10#
- 23007 Leg B/I, 1/30#
- 23028 Flank Steaks, 15#
- 23027 Flap Meat, 15#
- 23003 Shoulders BRN, 25#
- 23013 Spare Ribs, 20#
- 23020 Trim, 50#
- 23002 Bones, 40#
- 23008 Medallion 4oz, 10#
- 23016 Stew Meat (Diced), 2/5#
- 23010 Osso Bucco 2 inch, 15#
- 23006 Ground, 2/5#
- 23025 Ground, 10/1#

Our Wild Boar are captured from the hilly ranch country outside of San Antonio, Texas. Being wild they are entirely free-range, with no added hormones, steroids, or antibiotics.



Wild Boar Chops, cut from Frenched 8 Rib Rack

Their eclectic diet includes wild nuts, fruits, roots, and tubers. This leads to a product that is lean and has an exceptionally rich, nutty flavorful. Additionally, it gives it a completely different taste than commercially raised pork.

Antelope Flap Meat



Antelope:

- Domestic from Texas
- Free Range
- All Natural



Code	Item	FZN	CHD	Code	Item	FZN	CHD
POULTRY				POULTRY CONTINUED			
60001	Capon Breast B/O 32oz double, 5 pc			68014	Pheasant, 10/3-3½# (V/V)		
60003	Capon Whole, 6/7-8#			68015	Pheasant, 8/3½-4# (V/V)		
62007	Chicken F/R Whole, 14/4#		*	68003	Pheasant Bst B/O S/On 8-10oz 10/2pk		
62001	Chicken F/R A/L Brst, 20#			68002	Pheasant A/L Brst 8-10oz, 10/2pk (V/V)		
62051	Poulet Rouge (French Naked Neck Red Farm Chicken) 6/3#			68102	Pheasant A/L Brst 6-8oz, 10/2pk (V/V)		
63001	Cornish Game Hens, 24/22oz			68117	Pheasant Tenders, 10# (V/V)		
63104	Cornish Game Hens S/B/O, 16/14-16oz			68008	Pheasant Thighs B/O S/On, 6/5# (V/V)		
63106	Cornish Game Hens S/B/O, 16/10-12oz			68005	Pheasant Legs B/I, 8/10pk		
64017	Pekin Duck, 6/3-4#			68001	Pheasant Bones, 30#		
64018	Pekin Duck, 6/4-5#			69005	Poussin, 20/19-22oz		
64019	Pekin Duck, 6/5-6#			69016	Poussin, 24/14-18oz, S/P		*
64044	Pekin Duck Legs 20#			69008	Poussin S/B/O, 12/16-18oz		
64028	Pekin Duck w/Orange Sauce, 6/5-6#			69010	Poussin S/B/O, 24/13-15oz		*
64022	Pekin Duck Brst w/Orange Sauce, 10#			61001	Quail Jumbo S/B/O C/V, 12/6pk		*
64027	Pekin Duck Cooked ½'s w/Sauce, 12pc			61011	Quail Jumbo Whole C/V, 10/6pk		
64001	Pekin Duck Bones, 30#			61018	Quail Jumbo Whole, T/R, 6/6pk		
64007	M/L Pekin Duck Confit, 12pc (6/2pk)			61002	Quail Manchester S/B/O, 24pc (6/4pk)		
64025	M/L Pekin Duck Brst B/O 6-7oz, 10#			61003	Quail Plantation S/B/O, 9/4pk		
64024	M/L Pekin Duck Brst B/O 7-8oz, 10#			61008	Quail Plantation Whole, 9/4pk		
64026	M/L Pekin Duck Brst B/O 8-10oz, 10#			61013	Quail Brst B/O (Medallions), 9/6pk		
64080	M/L Pekin Duck A/L Brst 10-12oz, 10#			61026	Quail Legs B/I, 6/approx 24 pair		
64083	Moulard Duck Legs B/I, 16#			61005	Quail Eggs, 10pc tray		
64032	Muscovy Duck Hen, 8/4#		*	90027	Squab Whole, S/P, 24/13-15oz		*
64033	Muscovy Duck Drake, 6/10#			90029	Squab Whole, S/P, 12/13-15oz		
64031	Muscovy Duck Hen Brst, 20/16oz		*	90002	Squab S/B/O, 16/10-12oz		
64030	Musc Duck Drake Brst S/On, 10/30oz		*	90005	Squab B/O Brst, 12/2x3-4oz Dbl		
64035	Retail Muscovy Duck Drake Brst		*	90004	Squab A/L Brst, 12/2x4-5oz Dbl		
64029	Muscovy Duck Confit, 6/9pk			91005	Tur-Duc-Hen, 15#		
64036	Retail Muscovy Duck Hen Leg						
64011	Duck Ground 2/5#						
64008	Rendered Duck Fat Large Pail		*				
64009	Rendered Duck Fat Small Pail						
94006	Geese Whole 4/12-14#						
94005	Geese Whole 4/10-12#						
95014	Guinea Hen, 8/3-3½# (G/F)						
95001	Guinea Hen A/L Brst 6-8oz, 10#, (V/V)						
95002	Guinea Hen Legs B/I, 6/12pk, (G/F)						
66003	Partridge Chukar, HOFO, 25/15-19oz						

Add our game birds to your menu, and add some old world style, and new world flavor.
Poussin is French for a young chicken harvested at approximately 3 weeks.
Their white meat is fork tender and delicately flavored.



Whole Poussin

Code	Item	FZN	CHD	Code	Item	FZN	CHD
------	------	-----	-----	------	------	-----	-----

OSTRICH

- 65001 Fan Fillets, 25#
- 65003 Insides, 25#
- 65015 Top Loin, 25#
- 65014 Tenderloins, 25#
- 65024 Outside Strip, 25#
- 65002 Ground, 2/5# **Limited Inventory**
- 65006 Patties 2-1 Round, 10# **Limited Inventory**

RETAIL OSTRICH PRODUCTS

- 65018 Jerky Black Pepper, 2oz
- 65019 Jerky Black Pepper, 4oz

KANGAROO

- 19002 Kangaroo Loin B/O, 12#
- 19003 Kangaroo Medallions 4x4oz, 10#
- 19006 Kangaroo Rumps, 12#
- 19001 Kangaroo Ground, 2/5#
- 19011 Kangaroo Ground, 10/1#

***Please call ahead for current inventories**

ALLIGATOR

- 10004 Tenderloin, 8/5#
- 10003 Sirloin, 30/1#
- 10002 Sirloin, 8/5#
- 10005 Leg & Body, (trim) 8/5#
- 10007 Legs, 40#
- 10001 Ribs, 50#

TURTLE

- 13002 Boneless, 10/5#
- 13001 Bone In, 10/5#

FROG

- 93000 Frog Legs 4-6 (sets/lb), 30#
- 93002 Frog Legs 2-4 (sets/lb), 30#

RABBIT

- 11003 Whole Domestic Fryers, 6/2½-3# *
- 11011 Whole Domestic Fryers, 12/2½-3# *
- 11009 Saddles B/O, 10#
- 11008 Saddles B/I, 15#
- 11012 Strip Loin B/O, 12#
- 11005 Hind Legs B/I, 12#
- 11010 Trim, 30#
- 11002 Domestic Cut Ups, 15#
- 11007 Whole Domestic Roasters, 5/5#
- 11001 Bones, 30#



Nutritional Value of Edible Meats			
Edible Portion	%	%	Calories
Uncooked	Protein	Fat	Per lb.
Rabbit	20.8	10.2	795
Chicken	20.0	11.0	810
Veal	19.1	12.0	840
Turkey	20.1	20.0	1190
Lamb	15.7	27.7	1420
Beef	16.3	28.0	1440
Pork	11.9	45.0	2050

From USDA Circular #549

Code	Item	FZN	CHD	Code	Item	FZN	CHD
------	------	-----	-----	------	------	-----	-----

SMOKED PRODUCTS

62018	Chicken Whole, 12/2¼-2½#	*
62019	Chicken Whole, 12/3#+	*
62017	Chicken Breast, 2/8x10-12oz	*
64038	Duck Breast, 24-28oz, 12#	*
64039	Duck Prosciutto, 12-16oz, 10#	*
64137	Duck Breast, 16oz	*
32006	Ham Tasso, 10#	*
34003	Ham Virginia Sliced, 8/12oz	*
34008	Hickory Berkshire Ham, S/Off, 2/15#	*
34004	Ham Virginia, 4/12-14# (Dried, not smoked)	*

PORCHETTA PRIMATA

34031	Classic Porchetta, Whole H/O, 1/36#
34032	Tronchetto Di Porchetta, 2/5#

BACON

30005	Nueske's A/Smk Sliced 16-20ct, 30#	*
30006	Nueske's A/Smk Slab, 5/9-11#	*
30026	Nueske's Wild CherryWood Smk, Sliced 16-20ct, 2/5#	
31025	Wild Boar Slab, 2/5#	
30007	Dalicious Nitrate Free 16-20ct, 15#	
30001	Dalicious A/Smk Slice 14-16ct, 6/2.5#	
30003	Dalicious A/Smk Slab, 2/12-13#	
30010	Kurobuta Slab, 20#	
30011	Kurobuta Sliced, 10/1#	

VEAL

27001	Aust 8 rib Frnchd 14-16 oz rack, 10pc
27004	Bones, 44#

GOAT

17014	Whole, skin-off, under 26#
17001	6 Way cut up
17002	Legs, B/I
17021	Cubes, B/O, 10#
17011	Cubes, B/I, 10#



FREE RANGE GRASS-FED LAMB

CALL TODAY!

For availability and sizes.

Broadleaf is now offering:

New Zealand Lamb

Fresh

Frenched 7-8 Bone Racks
16-20oz, 7-8rib

B/O Loins

Frozen

Frenched 7-8 Bone Racks
From 12-14oz thru 20-22oz

Hind Shanks
From

Fore Shanks
From

EZ Carve Legs

AUSTRALIAN / NZ / DOMESTIC LAMB

For any specialty Australian, New Zealand or Domestic Lamb cuts please call us for pricing, availability and lead time.

16004	Ground Lamb, 2/5#
16006	Patties 2-1 Round, 10#
16005	Patties 4-1 Round, 10#

Code	Item	FZN	CHD
------	------	-----	-----

100% CERTIFIED BERKSHIRE PORK (AKA KUROBUTA)

33222	Tenderloin 415, 5/2 pc		*
33422	Tenderloin, 5/2pc (limited inventory)		
33203	8 Bone Frenched Rack, 5/5-7#		*
33204	8 Bone Rack, cap on, chine off, 5/5.5-7#		*
33217	Loin C/C B/O, 35#		*
33246	Loin NY Strip B/O, vein end off, 4/4#		*
33216	Full Loin B/I 410, 4/20#		*
33506	Loin Back Rib, 15#		
33205	Bellies B/O S/Off 1 Rib, 4/9#		*
33024	Cheek Meat, 10#		
33224	Cheek Meat, 15#		
33208	Boston Butt B/O, 50#		*
33207	Boston Butt B/I 406, 50#		*
33232	Ham B/O Leg, 2/14#		
33235	Ham B/I Leg Steamship Round, 2/15#		
34007	Ham B/I Leg Shank off, 2/15#		
34107	Ham B/I Leg Shank on, 2/15#		
33238	Shoulder Ribs 30#		
33213	Hind Shanks 22oz, 30#		
33011	Fore Shanks, 30#		
33009	Loin C/C B/O Chops 7oz, 10#		
33042	Loin C/C B/I Chops 12oz, 10#		
33010	Loin C/C B/I Chops 8oz, 10#		
33023	Loin C/C B/I Chops 6oz, 10#		
33111	Fore Shank Osso Buco, 16-18oz		
33212	Ground 20/1#		

FRESH SUCKLING / ROASTING PIGS

Order Tuesday for Thursday Pick Up *

FROZEN SUCKLING / ROASTING PIGS

35002	Whole Pig Head On, 1/15-19#		
35003	Whole Pig Head On, 1/20-29#		
35004	Whole Pig Head On, 1/30-39#		
35005	Whole Pig Head On, 1/40-49#		
35006	Whole Pig Head On, 1/50-59#		
35016	Whole Pig Head On, 1/60-69#		
35007	Whole Pig Head On, 1/70-79#		
35008	Whole Pig Head On, 1/80-89#		

Berkshire Pork - Superior taste and moisture

U.S. family farmers have continued to successfully raise "Kurobuta Berkshire" in this country, making available **THE WORLDS BEST PORK**. Its intramuscular marbling, where the natural flavor and juiciness reside will definitely impress.

- All Natural Pork
- No Artificial Ingredients
- Vegetarian Fed - No animal by-products
- Raised without hormones or steroids



Center Cut B/O Loin Chop

Code	Item	FZN	Code	Item	FZN
------	------	-----	------	------	-----

SAUSAGES BUFFALO

- 71014 Maple Breakfast 8-1, 14/14oz
- 71026 Smk w/Red Wine 5-1, 12/12oz
- 71027 C/R w/Chipotle Chilies 5-1, 12/12oz

SAUSAGES CHICKEN

- 71023 Jalapeno 4-1, 10/1#
- 71019 Apple & Walnut 5-1 12/1#
- 71024 Smk With Apple 5-1, 12/1#
- 71021 Habanero & Tequila 5-1 12/1#
- 71017 Apple Breakfast 10-1, 10/1#
- 71020 Basil & Sun-Dried Tom 5-1, 12/12oz
- 71028 C/R w/Apple & Cran 5-1, 12/12oz

SAUSAGES DUCK

- 71038 w/Bacon 4-1, 10/1#
- 71029 C/R w/Foie Gras 5-1, 12/12oz
- 71036 C/R Smk w/Apple Brandy 5-1, 12/12oz
- 71030 C/R w/Orange 5-1, 12/12oz

SAUSAGES ELK AND VENISON

- 71031 Elk w/Madera Wine 5-1, 12/12oz
- 71054 Venison 5-1, 12/12oz
- 71056 Smk Venison 5-1, 12/12oz
- 71037 C/R Venison & B/berry 5-1, 12/12oz

SAUSAGES LAMB

- 71042 w/Apple & Garlic 4-1, 10/1#
- 71043 Italian 4-1, 10/1#
- 71032 C/R Merguez 5-1, 12/12oz

SAUSAGES PORK

- 71051 British Bangers 8-1, 5/2#
- 71050 Pork Andouille 5-1, 12/12oz

SAUSAGES PHEASANT

- 71048 Smk 5-1, 10#
- 71047 Pheasant 4-1, 10/1#
- 71034 C/R w/Cognac 5-1, 12/12oz

SAUSAGES OSTRICH

- 71046 Smk w/Pistachios 4-1, 10#

SAUSAGES WILD BOAR

- 71002 Bratwurst 5-1, 12/12oz
- 71025 C/R w/Cranberries 5-1, 12/12oz
- 71003 Andouille 4-1, 12/1#
- 71005 Italian 4-1, 12/1#

OTHER SPECIALTY SAUSAGES

- 71103 Smk Alligator Andouille 4-1, 10/1#
- 71001 Smk Alligator Andouille 4-1, 10#
- 71073 Smk Turkey Maple B/Fast 8-1, 5#
- 71053 Veal Bockwurst 5-1, 12/1#
- 71035 C/R Rabbit with White Wine 5-1, 12/12oz
- 71044 Linguica 3-1, 5#



Sausage Selection

Great for game dinners and to keep protein costs down.

Combine with Broadleaf's S/B/O Quail, or game medallions to create a unique dining

Wild Boar Sausage w/ Cranberries

HOT DOGS

- 24079 Buffalo 5-1 Ret, 6/8pc (1.6#pk)
- 71012 Buffalo 5-1 6 inch, 2/5#
- 58968 Wagyu Beef 2-1 12 inch, 2/5#
- 58964 Wagyu Beef 3-1 8 inch, 2/5#
- 58984 Wagyu Beef 5-1 Ret, 6/8pc (1.6#pk)
- 58990 Wagyu Beef 5-1 6 inch, 2/5#
- 58911 Wagyu Beef 8-1, 2/5#
- 57960 Wagyu Beef 16-1, 2/5#
- 58960 Wagyu Beef 32-1, 10/1#
- 48977 Venison 7-1 Ret, 6/10pc (1.4#pk)

Code	Item	FZN	Code	Item	FZN
FABRIQUE DELICES SAUSAGES			GAME & GOURMET RAVIOLI - CHATEAUX ROYAL		
71011	Boudin Blanc w/ Truffles 4-1, 10/1#		70004	Lobster, 15/9.6oz (180 pc cs)	
71132	Basque Au Piment 8-1,12/12oz		70002	Buffalo, 15/9.6oz (180 pc cs)	
71088	Wild Boar w/Apple Cran 4-1, 10/1#		70003	Duck, 15/9.6oz (180 pc cs)	
71079	Duck w/Figs 4-1, 10/1#		70005	Pheasant, 15/9.6oz (180 pc cs)	
71010	Boudin Noir (Blood) 4-1, 10/1#		70006	Rabbit, 15/9.6oz (180 pc cs)	
71102	Lamb w/Fennel & Sundried Tom 8-1, 4/3#		70007	Venison, 15/9.6oz (180 pc cs)	
71071	Lamb Merguez Hot 8-1, 4/3#				
71009	Boudin Blanc 4-1, 10/1#				
71087	(Pork) Bistro Chipolata 8-1, 12/12oz				
71135	Saucisson a l'ail, (Pork) Garlic large, 12/1½#				
FABRIQUE DELICES SALAMI			<div data-bbox="1276 402 1663 532" data-label="Image"> </div> <p>Chateaux Royal Ravioli:</p> <p>All our meat fillings are oven roasted in small batches to produce a rich meaty taste. We only use high quality fresh ingredients. The result, pasta pockets bursting with flavor. Great as an Appetizer or Entree.</p> <div data-bbox="1041 824 1850 1425" data-label="Image"> </div> <p>Duck Ravioli with Basil</p>		
64242	Cured Duck Salami, 10/1#				
71121	Saucisson Sec (French Style Dry), 8/10-12oz				
71122	Chorizo d'España (Spanish Style Dry), 10/1#				
JODY MARONI'S GOURMET SAUSAGE					
71136	Smk Chicken Pomegranate w/basil 4-1, 12/1#				
71137	Smk Chicken Mole 4-1, 12/1#				
71138	British Bangers 8-1, 6/5#				
TONY CHACHERE'S SAUSAGE					
71085	Boudin Mild (Pork & Rice) 3pc/pk, 12/14oz pk				
71086	Boudin Hot (Pork & Rice) 3pc/pk , 12/14oz pk				
ROBERT ALLEN'S GOURMET SAUSAGES - ALL NATURAL					
71145	Smk Pork w/Honey & Apple 5-1, 8/12oz				
71146	Smk Pork w/Red Pepper & Tomato 5-1, 8/12oz				
71147	Smk Pork w/Spinach & Asiago Cheese 5-1, 8/12				
SAUSAGE MAKERS SECTION					
23020	Antelope Trim, 50#				
64006	Duck Breast Meat Pieces (Trim), #30				
87042	Elk Trim, 60#				
16007	Lamb Trim, 60#				
68008	Pheasant Thigh Meat B/O (Trim), 30#				
97001	Venison Trim, 60#				
55645	Wagyu Beef, 50% CL, 60#				
31023	Wild Boar Trim, 50#				

Code	Item	FZN	CHD	Code	Item
------	------	-----	-----	------	------

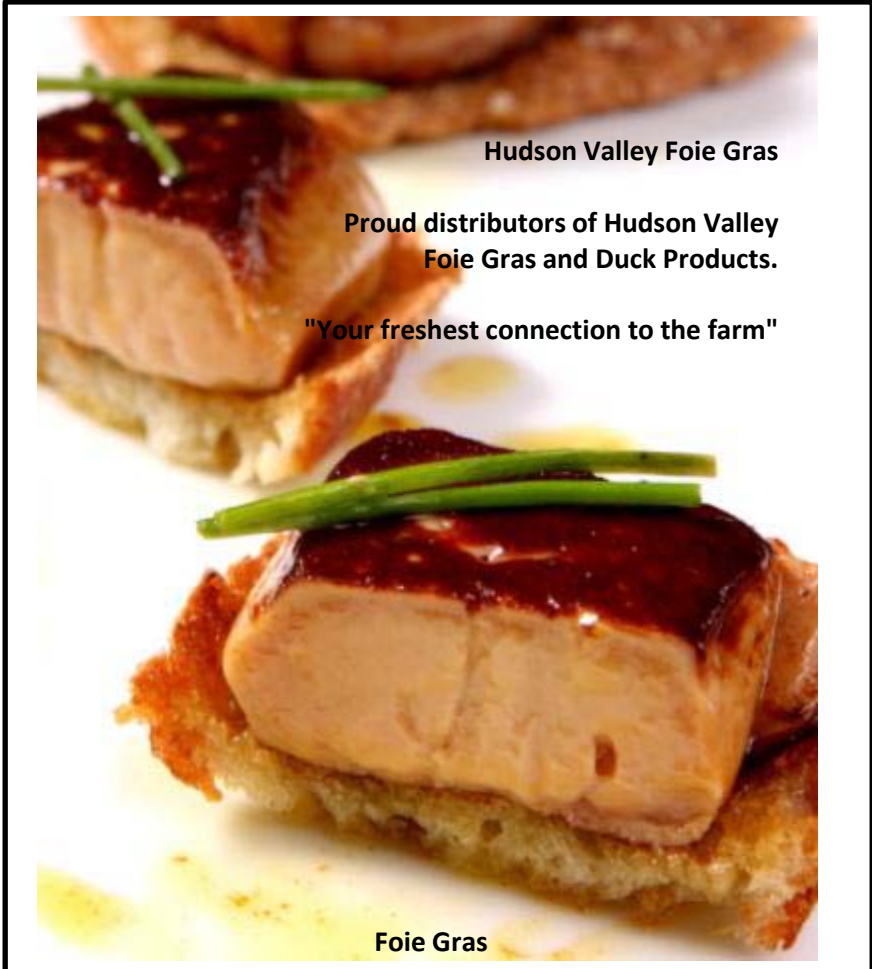
FOIE GRAS

- 92001 Duck Foie Gras A Hudson *
- 92004 Duck Foie Gras A, 2oz Sliced Hudson
- 92010 Duck Foie Gras A Bella Bella
- 92002 Duck Foie Gras B Hudson *
- 92015 Duck Foie Gras B Bella Bella
- 92003 Duck Foie Gras C Hudson

Please note: Due to limited supply, frozen Foie Gras may not always be available. We apologize for the inconvenience.

TRADITIONAL PATES, MOUSSES

- 67004 Duck Foie Gras w/30% large pc, 2/2.2#
- 67012 Goose Supreme w/Sauternes-Pork Free, 2/3½#
- 67013 Pheasant Terrine w/Figs & Pistachios, 2/3½#
- 67026 Smoked Salmon & Spinach Mousse, 2/3½#
- 67005 Duck Galantine w/Truffles and Pistachios, 2/5#
- 67021 Truffle Mousse, 2/3½#
- 67014 Rabbit w/Prunes & Cognac, 2/3½#
- 67018 Venison w/Apricots & Hazelnuts, 2/3½#
- 67006 Duck w/Port Wine-Pork Free, 2/3½#
- 67022 Chicken Liver Mousse w/Black Truffles, 2/3½#
- 67017 Vegetable, 2/3½#
- 67010 Forestier (Mushroom), 2/3½#
- 67002 De Champagne w/Black Pepper, 2/3½#





We at Broadleaf are proud to offer Fabrique Délices, the finest in high quality gourmet All Natural Pâtés, Mousses, Rillettes, Sausages, Saucisson Sec, Cured & Smoked Meats & Other Gourmet Specialties. We are always offering new products with commitment to quality and tradition which are the key ingredients.



Code	Item	FZN	CHD	Code	Item	FZN	CHD
------	------	-----	-----	------	------	-----	-----

BROADLEAF CERVENA VENISON

42002	Saddle B/I, 3/14# down		*
42003	Saddle B/I, 3/14# up		*
43064	Tenderloin, 10/2pk		*
42126	NY Strip Loin, TTS, 10/1½-2#		*
43016	Strip Loin Full TTS, 9/3½-4½#		*
42086	Frenched 8 Rib Rack, 10/2-2½#		*
42026	Frenched 2 Rib Rack, 20/2pk (1#pk)		*
45034	Denver Leg B/O, 2/5#		*
45013	Denver Leg Portion B/O, 10#		*
44011	Leg B/I, 2/20#		*

NEW ZEALAND RED DEER

93048	Tenderloin, 12#
93049	Strip Loin Full TTS, 25#
51002	Flank Steaks, 15#
86032	Jerky Steaks Desinewed, 40#
85143	Knuckle Cap On
85142	Bottom Round Cap On
96046	Shoulder B/O BRN, approx 6/6#
96078	Shoulder B/O BRN, approx 10/2#
97018	Hind Shanks, 45#
45051	Bones, 30#
48988	Medallions 4oz, 10#
48987	Medallions 6oz, 10#
48986	Medallions 8oz, 10#
48993	Loin Chops B/I 8-10oz
48994	Loin Chops B/I 10-12oz
48996	Rib Chops B/I 8-10oz
48997	Rib Chops B/I 10-12oz
48985	Osso Bucco Fore Shank 2 inch, 10#
48984	Osso Bucco Fore Shank 3 inch, 10#
48992	Ground Consomme (Chilli grind) 2/5#
48990	Ground, 2/5#
48991	Ground, 10/1#
48982	Patties 2-1 Round, 10#
48981	Patties 3-1 Round, 10#
48980	Patties 4-1 Round, 10#
48978	Stew Meat (Diced), 2/5#
48979	Stew Meat (Diced), 10/1#

Broadleaf Cervena Venison - Guarantees Quality

Cervena Farmers are required to meet exacting standards to ensure the quality of their product. They don't use steroids or growth promotants. The animals have the freedom to roam on the New Zealand pastures and graze on an ideal diet of grass and natural supplements. Every year their practices are measured against the strict criteria of the Deer Quality Assurance Program.



Venison Medallions

Nutritional Comparison based on 100 grams cooked:

	Fat	Calories	Cholesterol
Venison, Leg Cut, Roasted	6gm	157	73mg
Beef Topside, Lean, Roasted	55gm	183	81mg
Chicken Leg, No Skin, Grilled	11gm	197	148mg
Salmon Broiled	6gm	71	71mg

RETAIL VENISON PRODUCTS

48948	Medallions Boxed, 6/3x4oz
48943	Stir-Fry Boxed, 6/1#
48945	Ground Boxed, 6/1#
48940	Patties Boxed, 6/4x4oz
48972	Jerky Black Pepper, 2oz
48970	Jerky Black Pepper, 4oz

*
*

All Prices Listed are FOB Los Angeles and are Subject to Change at Any Time

Code	Item	FZN	CHD	Code	Item	FZN	CHD
------	------	-----	-----	------	------	-----	-----

BROADLEAF CERVENA ELK / WAPITI X

- 42007 Saddle B/I (Split), 2/20#
- 43025 Tenderloin, 5/2pk
- 43017 NY Strip Loin, DND, 10/1½-2#
- 43056 Strip Loin Full TTS, 9/4-5#
- 42052 Frenched 8 Rib Rack, 8/2½-3#
- 42027 Frenched 2 Rib Rack, 20/2pk (1#pk)
- 45028 Denver Leg B/O, 2/5#
- 45068 Denver Leg Portion B/O, 10#

*
*
*
*
*
*
*

BROADLEAF ELK / WAPITI X

- 83104 Tenderloin, 15#
- 83123 Strip Loin Full TTS, 30#
- 41002 Flank Steaks, 15#
- 86060 Jerky Steaks Desinewed, 45#
- 96047 Shoulder B/O BRN, 25#
- 87042 Trim, 60#
- 49992 Loin steaks 4oz, 10#
- 49991 Medallions 4oz, 10#
- 49990 Medallions 6oz, 10#
- 49989 Medallions 8oz, 10#
- 49995 Loin Chops B/I 8-10oz
- 49998 Loin Chops B/I 10-12oz
- 49965 Ground Consomme (Chilli grind) 2/5#
- 49993 Ground, 2/5#
- 49994 Ground, 10/1#
- 49988 Patties 2-1 Round, 10#
- 49987 Patties 3-1 Round, 10#
- 49986 Patties 4-1 Round, 10#
- 49984 Stew Meat (Diced), 2/5#
- 49983 Stew Meat (Diced), 10/1#

RETAIL ELK PRODUCTS

- 49981 Jerky Black Pepper, 2oz
- 49979 Jerky Black Pepper, 4oz

*
*

OTHER

- 18001 Huckleberry Fruit 5/5#



Elk Chop, cut from Frenched 8 Rib Rack

New Zealand Farm-Raised Elk

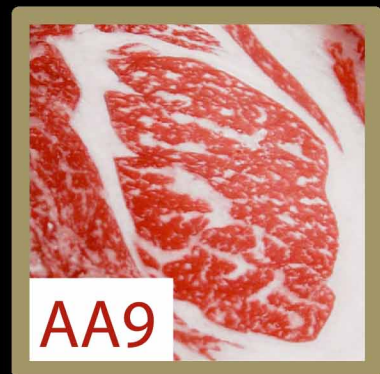
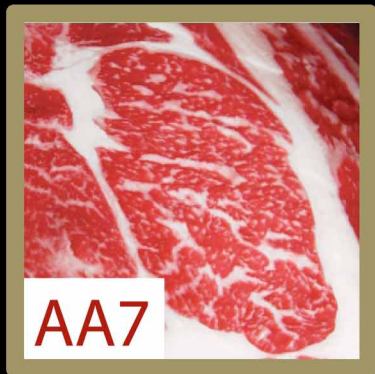
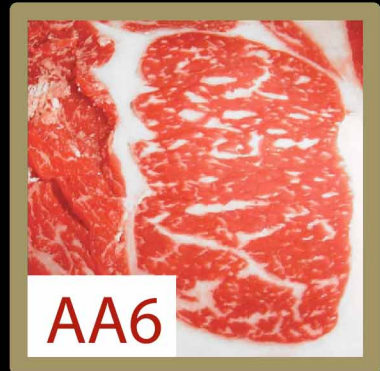
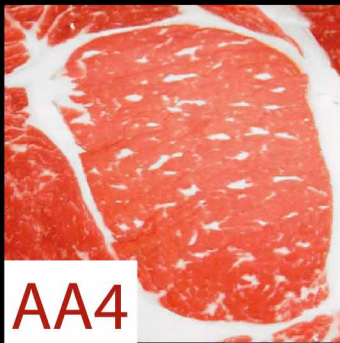
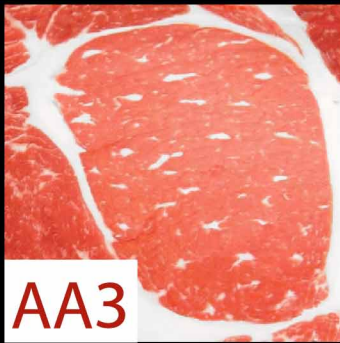
- All Natural
- Humanely Raised
- Exceptionally Lean

Great menu items ranging from Frenched 8 rib racks for COP to portion controlled and ground items for game platter



Elk Patties

Greg Norman Signature Wagyu Grading System



Greg Norman Signature Wagyu Beef is finished for a minimum of 300 days on a special Japanese formulation of grains to produce an incredibly marbled, high quality product. This finishing method along with superior Wagyu genetics leads to butter knife tenderness. GNSW provides a “farm-to-plate” program that ensures you can count on a consistent, high marbled and flavored product every time. GNSW will impress even your most discerning guests!

